

Keysight Technologies

N6841A RF Sensor  
for Signal Monitoring Networks

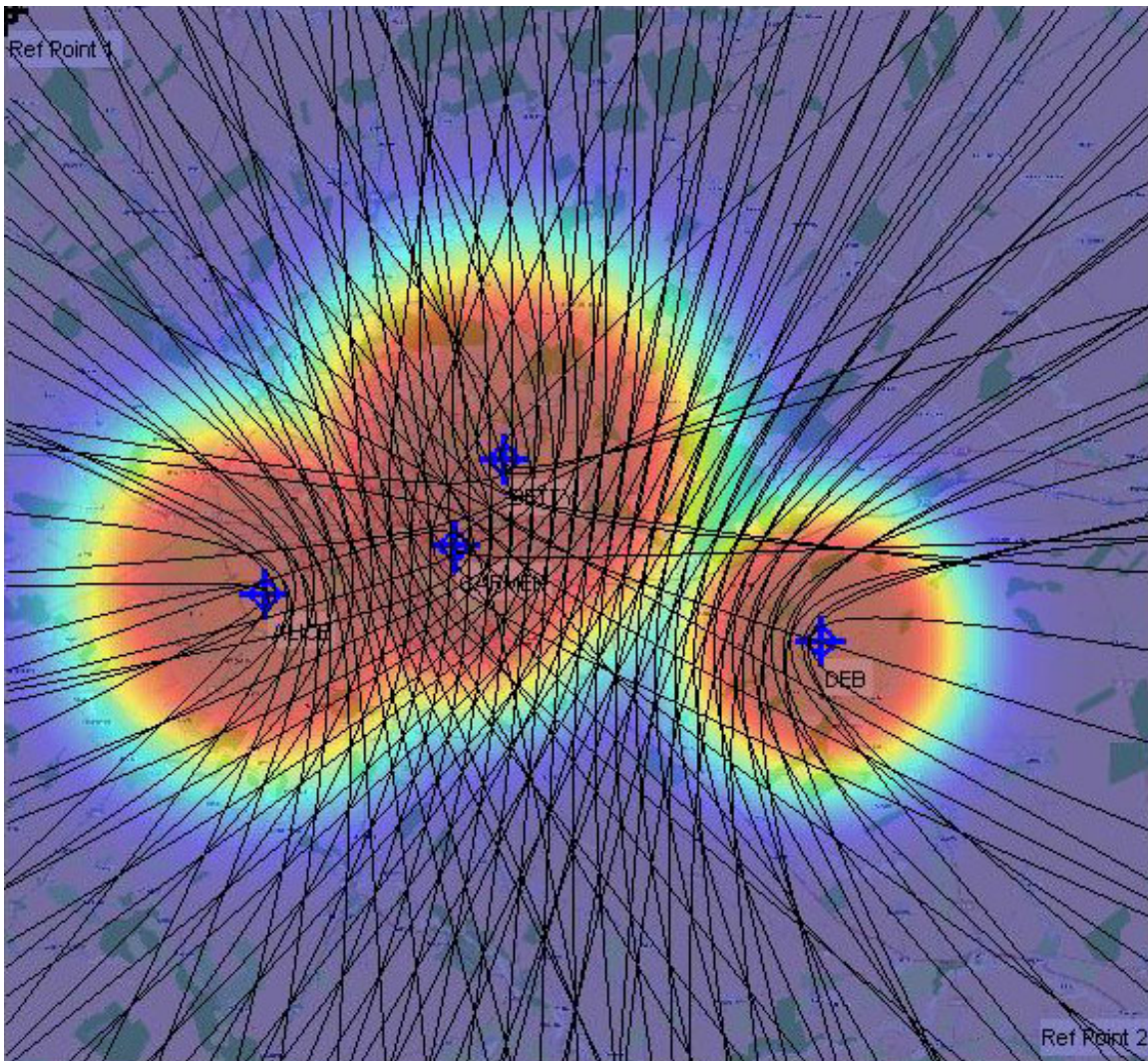
Data Sheet



## Key Features

“I’ve got bursting interferers that need to be reliably detected, classified, identified and located. I’ve already done the easy ones with my older generation equipment...”

- Environmentally rugged IP67-rated weatherproof enclosure. Sealed unit with no moving internal parts
- Small footprint for ease of setup and teardown
- Wideband RF receiver with 20 MHz to 6 GHz frequency range
- Optional third party frequency extender can be purchased to increase frequency range from 100 kHz to 27.4 GHz
- Digital IF bandwidth adjustable up to 20 MHz
- Signal LOOKback memory (4.8 secs at 20 MHz BW)—enables reliable detection, processing and location of short duration signals or interference
- I/Q streaming up to 1.9 MHz bandwidth for recording or off board signal processing
- Integrated GPS for sensor location and time synchronous applications
- High precision measurement synchronization and time-stamping
- AM/FM demodulated audio streaming
- Two Type-N RF input ports (switched) for multiple antennas
- Well documented API for user programming and application development
- Wide range of Sensor applications to meet your specific monitoring, analysis or location requirements



# Overview

The Keysight Technologies, Inc. N6841A RF Sensor represents an entirely new concept in spectrum monitoring. Communication signals have evolved dramatically and continue to do so as new and emerging wireless standards are defined and deployed. These new generation signals are wider bandwidth, more complex, time variant and low power. Traditional methods of monitoring communication signals from outside the city limits, a crowded vehicle or walking with a handheld analyzer just don't work well on these new standards or today's interference problems.

The Keysight N6841A RF Sensor offers a cost effective solution to placing a fully capable RF monitoring station where you need it, when you need it for as long as you need it, without complex siting constraints or physical infrastructure.

## Use Models for RF Sensors

- Spectrum survey with signal classification and database operations
- Interference detection, collection, classification, identification and location
- Band Clearing/spectrum occupancy/utilization monitoring
- Border or regional area RF monitoring and geolocation
- Range monitoring
- Spectrum awareness associated with RF testing
- Enforcing your organization's spectrum policy

## Customers

- Military and Intelligence operations
- Frequency Regulatory Agencies
- Mobile Service Providers
- Government Range Managers
- Spectrum/Frequency Managers
- RF Test Managers
- Anyone monitoring or working with "off the air" RF signals

## Measurements you can make with the RF Sensor and its applications

- 24/7 Real time remote spectrum monitoring and analysis from the comfort of your office
- High speed spectral search and signal isolation
- I/Q recording and signal classification, demodulation and decoding
- Analog and digital signal analysis
- Comprehensive ITU signal measurements
- Emitter location
- Custom applications using the Sensor Access Library (SAL) API



# Deployments

The N6841A RF Sensor has a weatherproof and dustproof IP67-rated (Standard IEC 60529 International Protection 67) enclosure plus a wide operating temperature range to withstand harsh environments without additional expensive protective enclosures. The unit is convection cooled, silent and contains no moving parts. It operates over a temperature range of  $-15^{\circ}\text{C}$  to  $55^{\circ}\text{C}$ . The range can be extended by use of commercially available enclosures that provide heat and ventilation as needed for extreme temperature conditions.

This receiver has a small footprint with no external switches or status indicators making it extremely discreet. The low-profile form factor offers many mounting options, including tripod, roof-top, pole-top, rack-mount, vehicle-mount or man-pack deployments. Relative to other solutions, the N6841A RF Sensor requires a minimum of installation engineering, and is likely to gain easy approval for installation from building managers. It is also very well suited to temporary installations.

On-board diagnostics include complete self-test of the internal RF signal path and a watchdog reset timer. This reduces the need for on-site troubleshooting. Installation and configuration of the RF sensor is simple with only RF input, GPS antenna (optional), power and network connections.

More detailed information regarding installation is provided in the N6841A Installation Guide (Publication Number N6841-90002).

## Antennas

The N6841A RF Sensor can be used with any passive or active antenna element. A specific antenna is not stipulated for use with the RF Sensor to ensure maximum flexibility of the solution. In most cases, a simple and low cost discone or dipole antenna works very well and provides enough coverage to make the measurements needed without excessive expense or additional power.

## Power Considerations

The N6841A RF Sensor is powered by DC voltage ranging from 15 to 24VDC and it draws less than 30W. Option SP1 provides a 120/240 VAC power supply suitable for indoor (protected) installations. Off-the-shelf batteries are available from a number of suppliers that can power the RF Sensor for up to eight hours. There are also power supplies rated for outdoor use available from various suppliers. The RF Sensor ships with an extra power connector for use with an alternate power source.

## Network Connections

Many times, a wired Internet connection is not possible for the ideal RF Sensor location. In these cases, either a 3G or 4G modem or Wi-Fi backhaul may be an option. Standard Wi-Fi radios with directional antennas can easily service the data connection to an RF Sensor over 2.5 to 3km. If greater distances are needed, a cellular modem provides the freedom to site the sensor anywhere in the cellular coverage area. If wired Ethernet is available for your installation, shielded cable is highly recommended to reduce the chance of interference.

## Physical Mounting

The N6841A RF Sensor ships with a complete mounting kit for attachment to a rack, wall or pole. The mounting bracket includes provision for security locks, attachment of the GPS antenna and the RF Sensor. Aside from the RF Antenna, only one connection to the pole is required for a new RF monitoring station.

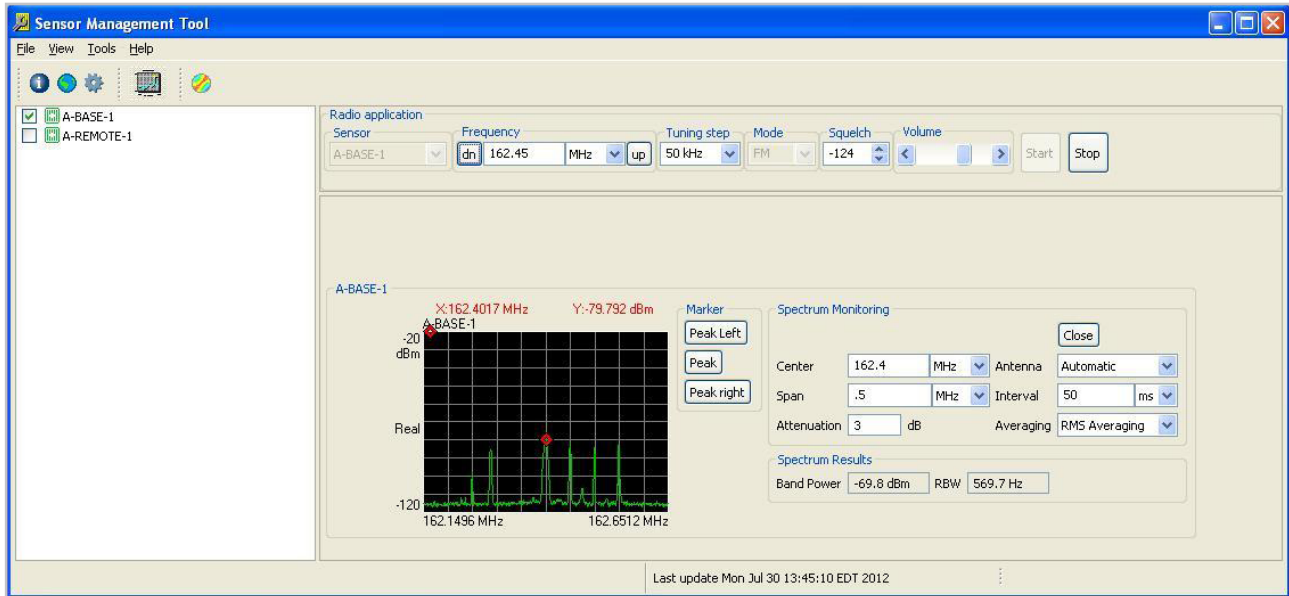
## Multiple Sensors

One of the benefits of deploying multiple sensors is improved RF detection range and the ability to make time synchronous I/Q and spectral measurements. This capability opens the door to emitter location and direction finding applications, propagation studies and other applications. N6841A RF Sensors can be synchronized using two different methods: GPS (for outside deployments) and IEEE-1588 (for indoor deployments or wherever GPS may not be available).

# Sensor Software Applications

## Sensor Management Tool (SMT)

The N6841A RF Sensor ships with the latest release of SMT. This application provides the user with a quick and easy way of setting up the RF Sensor remotely on their network, connecting, configuring and managing the sensor network. SMT also provides health and status monitoring of each sensor as well as a simple Spectrum Viewer and Radio application. This software is also available for download at [www.keysight.com/find/RFsensor](http://www.keysight.com/find/RFsensor)



The screenshot displays the Sensor Management Tool (SMT) interface showing the sensor status table. The table has columns for Status, Location, Last check-in, Timesync, SMS Offset, Up Time, and Availability. The data is as follows:

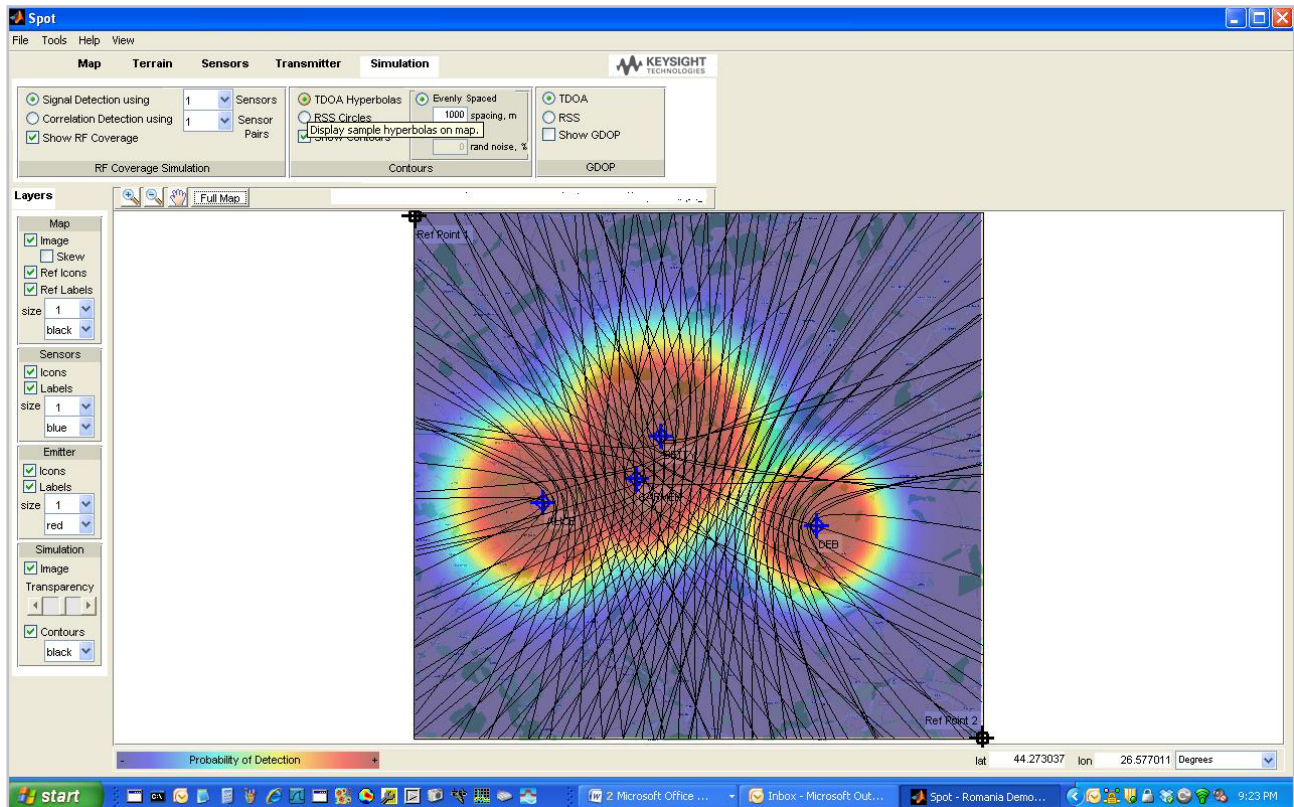
Status	Location	Last check-in	Timesync	SMS Offset	Up Time	Availability
CurrentStatus, REL 2.0.2, BUILD 2004, FPGA 11112916	E, 97 m	2012-07-30 15:06:12.0	GPS, Var: 8.54e-17...	1.6 s	34 days 11:04:32, boot count: 23	Unlocked
CurrentStatus, SMS 148.5.244.154, REL 2.0.2, BUILD 2010, FPGA 11112916	E, 94 m	2012-07-30 15:05:51.0	GPS, Var: 9.50e-17...	1.6 s	25 days 05:49:41, boot count: 31	Unlocked

The bottom status bar indicates the last update was on Mon Jul 30 15:06:12 EDT 2012.

# Sensor Software Applications

## Sensor Placement and Optimization Tool (SPOT)

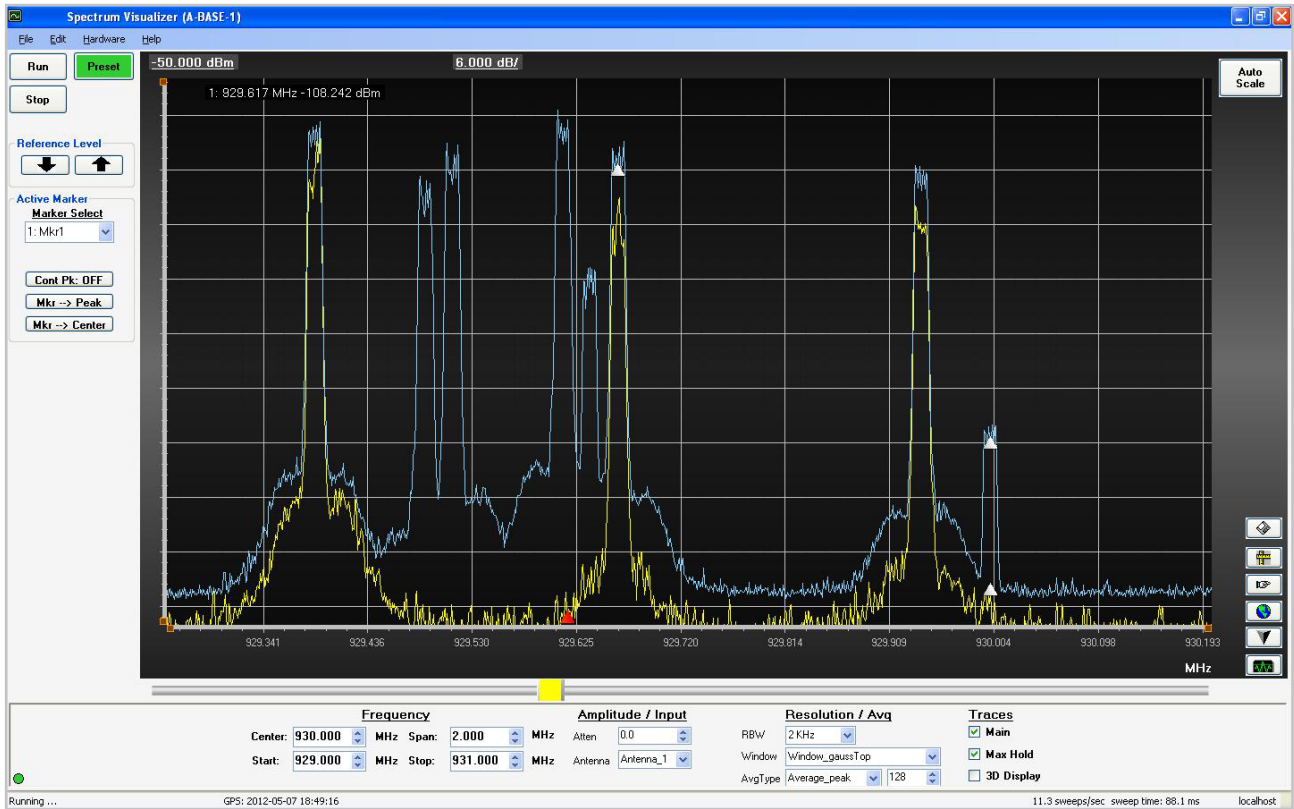
SPOT is supplied with SMT and is an invaluable tool for planning sensor deployments. SPOT allows a map image to be imported and calibrated then simulates the RF coverage that can be expected from the exact locations selected for the RF Sensor network. SPOT can determine how well the sensor network will perform against a specific radio transmitter by entering the center frequency, bandwidth and power output. Each sensor location is defined not only by its latitude and longitude, but also by elevation, antenna pattern, pre-amplifier effects as well as other parameters. SPOT also provides insight into the effectiveness of the sensor geometry in performing geolocation measurements. GDOP and lines of constant time or power can be displayed to aid in system design.



# Sensor Software Applications

## Spectrum Analysis

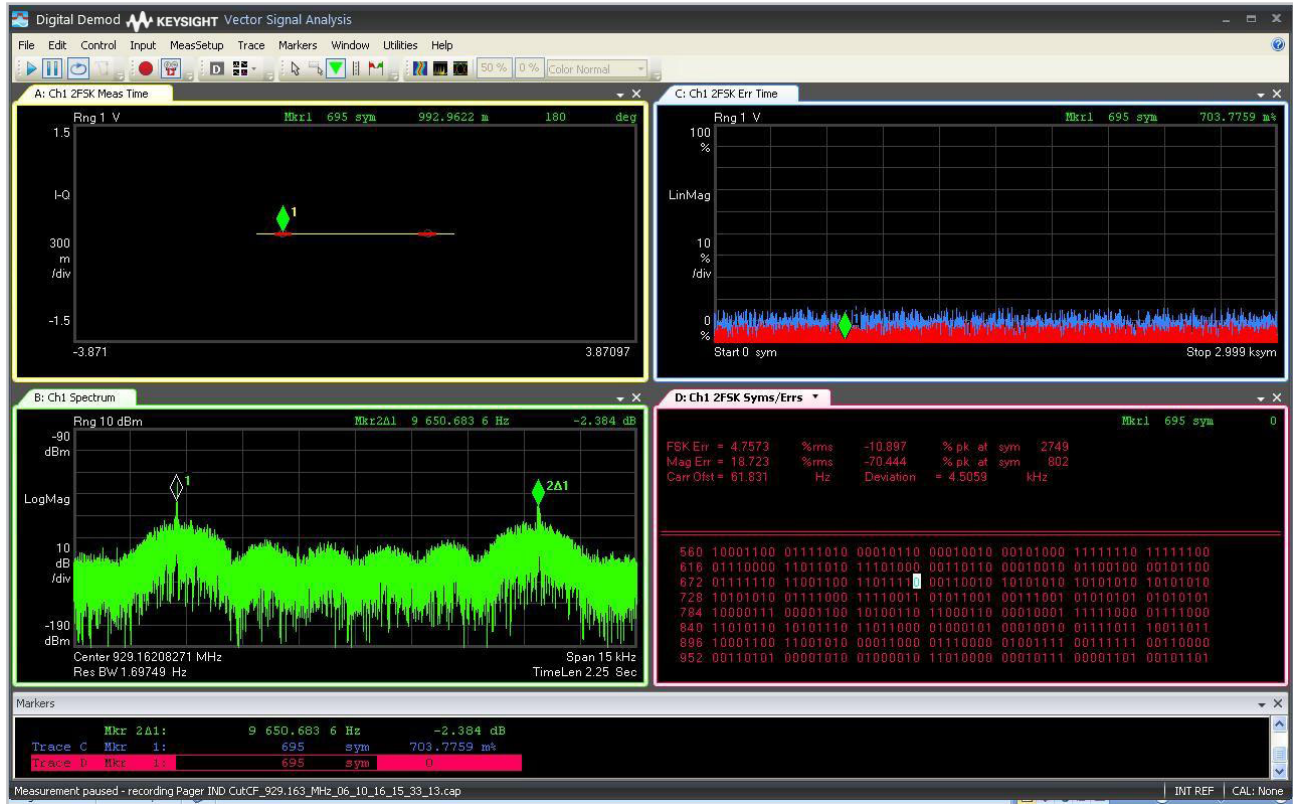
The Keysight Spectrum Visualizer is a simple and easy to use application for performing classic spectrum analysis with the added benefit of recording I/Q data. The application can be purchased using the part number PX-X10-100.



# Sensor Software Applications

## Vector Signal Analysis (VSA)

Keysight's VSA software is an industry standard used throughout the wireless communications and aerospace/defense industries for collection and processing of all forms of RF signals. It has an extensive library of wireless communications demodulators and decoders. The VSA software will turn the N6841A RF Sensor into a world class signal collection and analysis tool that can be operated literally from across the world.

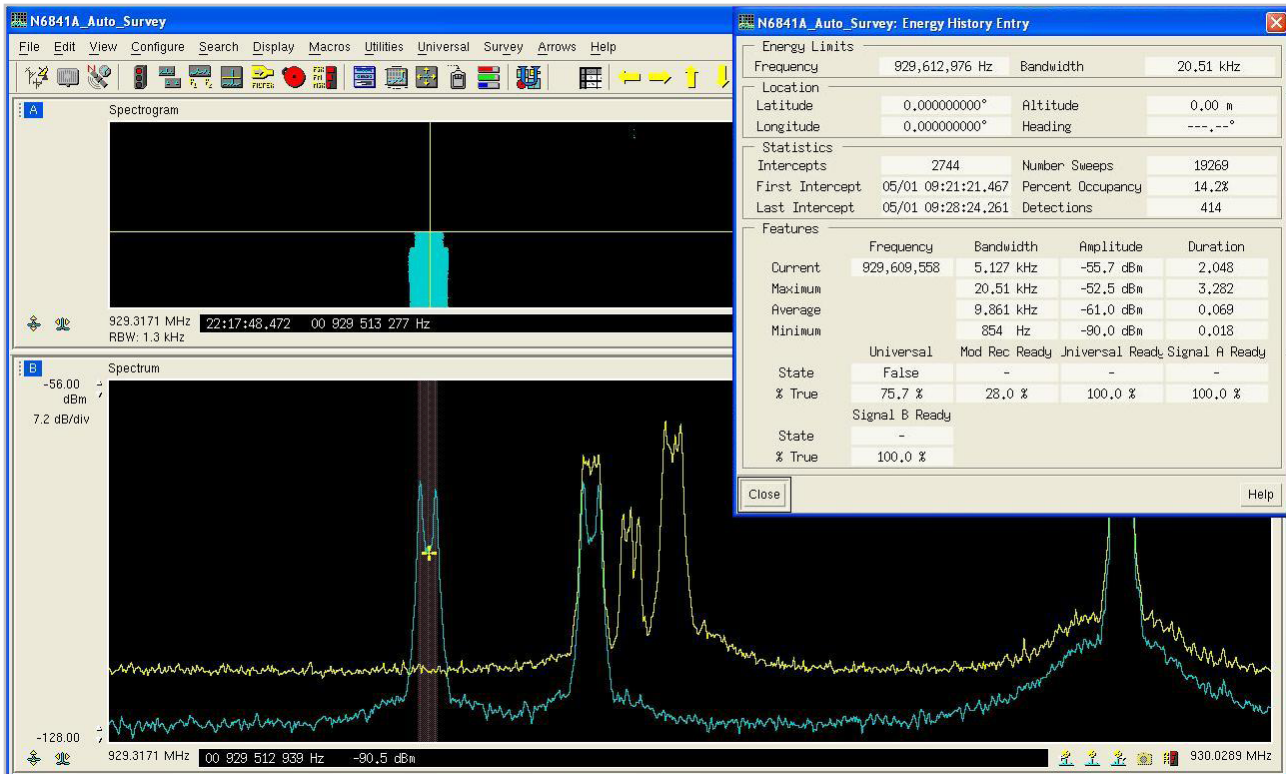




# Sensor Software Applications

## Signal Surveyor

This application provides high speed spectral search, advanced energy detection and signal isolation algorithms. Depending on the option set, signal classification and automated modulation recognition routines are also available. Automation of search, collection, classification and location tasks are possible with this powerful application. For a more detailed description of Signal Surveyor, visit [www.keysight.com/find/N6820ES](http://www.keysight.com/find/N6820ES)



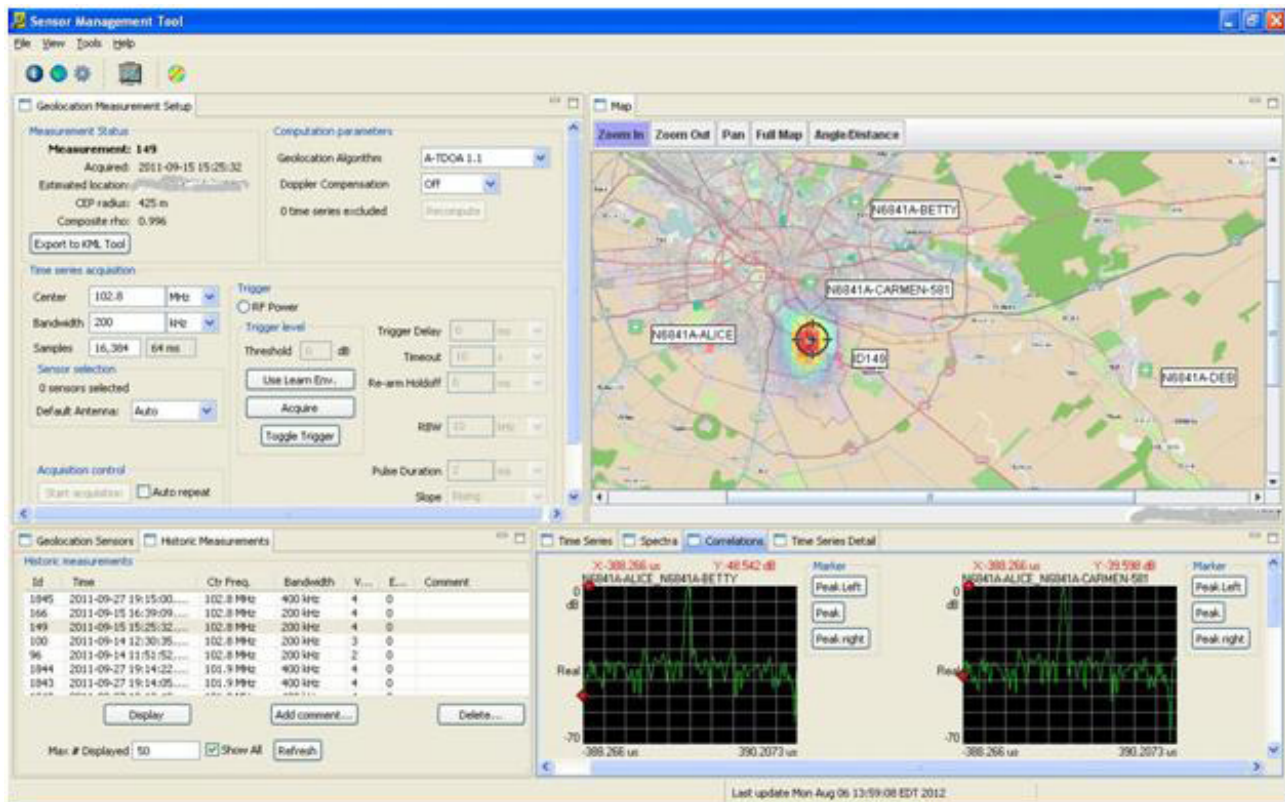
# Sensor Software Applications

## Keysight GEO Server Software (GSS)

GSS is a licensed application that embeds within SMT and enables the user to easily make geolocation measurements on signals of interest using either time or power based triggering. This application offers three different geolocation algorithms:

- Time Difference of Arrival (TDOA)
- Received Signal Strength (RSS)
- Hybrid (an adaptive algorithm that uses both time and power information)

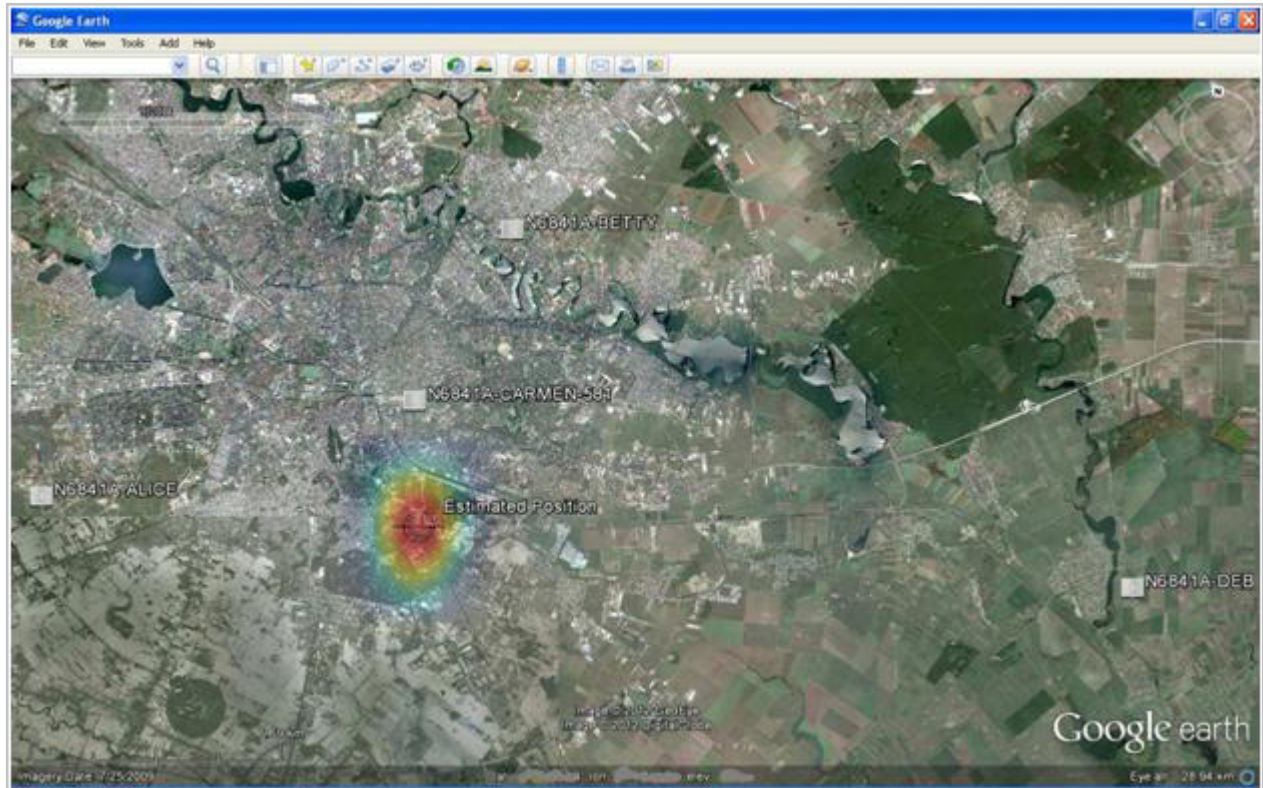
GSS makes measurements either manually or automatically when integrated with Signal Surveyor. The results (including the I/Q data) are stored in a signals database to allow the user to revisit the geolocation measurements, try different algorithms and include or exclude data from any of the sensors used in the original measurement.



## Sensor Software Applications

### N6854A to KML Software

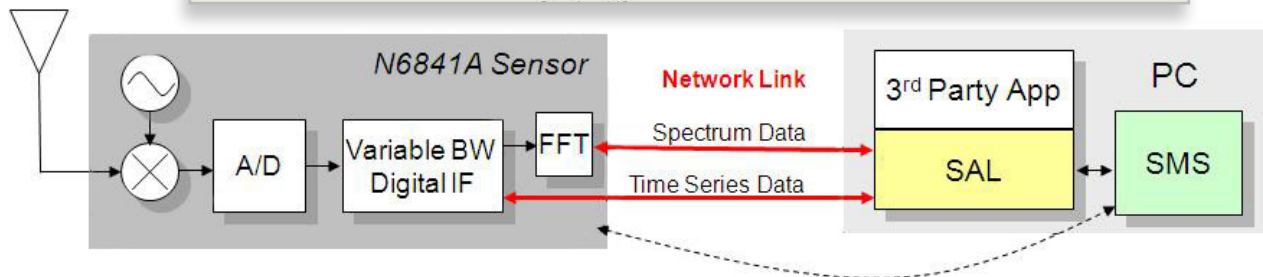
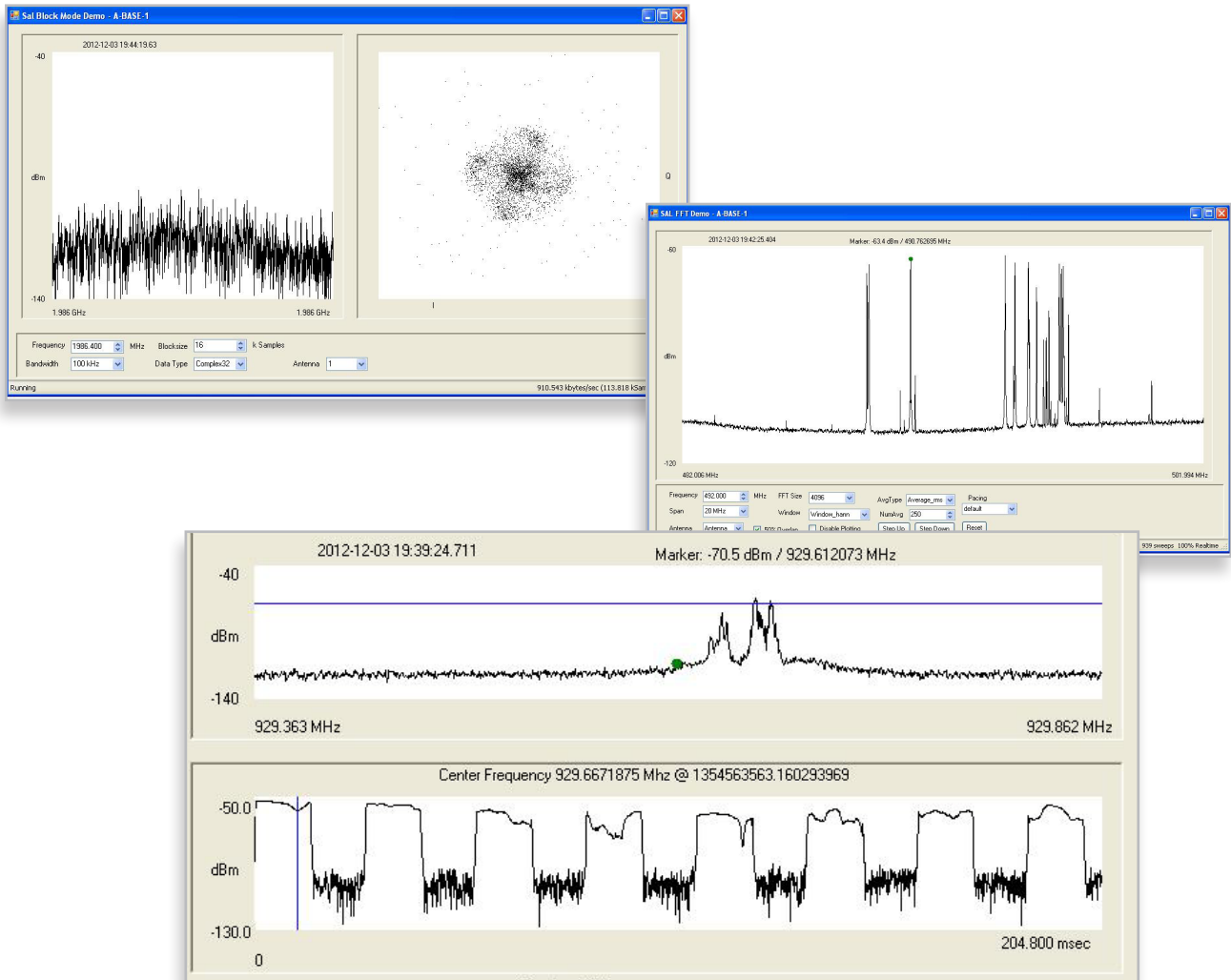
Included with GSS is a KML export tool which can refine the location results further and display them in commonly used geographic information systems. This powerful Geo-Analytics software package is an essential part of any modern spectrum monitoring system.



# Sensor Software Applications

## User-defined enterprise software applications

Some customers have developed monitoring or location algorithms that serve very specific needs, but need rugged and reliable receiver hardware that will support fixed, mobile and temporary installations. The Keysight Sensor Access Library (SAL) provides a comprehensive API that allows programmers to interface the N6841A into an existing enterprise system. SAL offers over 50 callable routines that provide access to FFT, I/Q and audio data in single or multiple (synchronized) measurements. Full command and control of the RF Sensor is possible from any third party Windows application.





## Configuration and Ordering Information

Part number	Description
<b>RF Sensor Hardware</b>	
N6841A	RF Sensor Includes SMT, SPOT, KML software, connector and mounting kit
N6841A-GPS	Adds GPS capability, includes cable and active antenna
N6841A-SP1	Adds 120/240 VAC power adapter (indoor mount only)
N6841A-GFP	Geolocation enabler
N6841A-CFP	Frequency extender enabler (3rd party frequency extender not included)
<b>Signal Surveyor</b>	
N6820ES	Signal Surveyor Software for the RF Sensor
N6820ES-114	Basic Search, intercept and collection software
N6820ES-SSY	Synchronous Sweep enabler
N6820ES-USD	Universal Signal Detector
N6820ES-MR1	Host-Based Modulation Recognition
N6820ES-ASD	User Programming
N6820ES-1RU	1 year of software updates and factory support
N6820ES-2RU	2 years of software updates and factory support
N6820ES-B02	Software bundle includes all options plus 1RU
<b>Geolocation Server</b>	
N6854A	Geolocation Server Software
N6854A-103	Basic software includes TDOA geolocation only
N6854A-AG1	Optional power-based location algorithms (RSS and Hybrid)
<b>Vector Signal Analyzer</b>	
89601B	Keysight Vector Signal Analyzer
89601B-200	Basic software
89601B-300	Hardware connectivity
89601B-AYA	Flexible Demodulation capability
<i>Contact your local Keysight Field Engineer to assure your VSA configuration is complete for your application.</i>	
<b>Keysight Spectrum Visualizer</b>	
PX-X10-100	Keysight Spectrum Visualizer for the RF Sensor

## Technical Specifications and Operating Characteristics

All performance data is 80%/80% typical at room temperature unless otherwise indicated.

Frequency		
Frequency range	20 MHz to 6 GHz (frequency extension to 100 kHz to 27.4 GHz with 3rd party freq extender)	
Frequency reference accuracy	± 0.1 ppm (with GPS)	
Frequency tuning resolution	0.01 Hz	
Frequency Span	Adjustable from 5 Hz to maximum frequency range	
Max IF bandwidth	20 MHz (Digital only)	
Tuner settling time	< 5 ms	
Sweep Speed	> 4 GHz/sec with 10 kHz RBW	
Phase noise @ 1 GHz	10 kHz offset:	-82 dBc/Hz
	100 kHz offset:	-98 dBc/Hz
Pre-selection filters	7 bands: 20-1800 (preamp off), 750-1800 (preamp on), 1800-2700, 2700-3250, 3250-4150, 4150-5050, 5050-6000 MHz	
Resolution Bandwidth (RBW)	Selectivity	Adjustable Shape factor: 2.6, 4.0 and 9.0 to 1
	Range	Using N6820ES software: 5 Hz, 10 Hz, 40 Hz, 90 Hz, 170 Hz, 330 Hz, 650 Hz, 1.29 kHz, 2.57 kHz, 5.13 kHz, 10.26 kHz, 20.51 kHz, 41.01 kHz, 82.04 kHz, 164.07 kHz, 328.13 kHz, 656.25 kHz Using SAL API: 5 Hz to 1.67 MHz

### Zero Span/Time Domain

N6841A offers Digital IF. I/Q recordings can be made with bandwidths and durations as indicated below.

I/Q recording	Signal Bandwidth	I-Q Recording Time		
		Seconds	Minutes	Hours
	21.9 MHz	4.8		
	10.9 MHz	9.6		
	5.5 MHz	19.2		
	2.7 MHz	38.4		
	1.4 MHz	38.4		
	684 kHz		1.28	
	342 kHz		2.56	
	171 kHz		5.12	
	85 kHz		10.3	
	43 kHz		20.5	
	21 kHz		40.9	
	11 kHz			1.36
	5 kHz			2.7
	3 kHz			5.45
	1 kHz			10.9

For bandwidths below 1.9 MHz, streaming to disk is an effective way to record I/Q data provided the connection from the sensor to the computer is full 100 Base T. This is achieved via SAL programming.

Time Domain Display modes	Amplitude, Phase, Frequency, I and Q versus Time, Constellation diagrams and Vector Demodulation modes (using Vector Signal Analysis software)
---------------------------	--

## Technical Specifications and Operating Characteristics

<b>Trigger</b>				
Trigger Type	Free Run; Frequency/Amplitude/Bandwidth/Duration Selective Trigger functions; Auto, File and Environmental Mask Trigger; Time paced (x sweep per second); Counter (x sweeps then stop)			
Universal Signal Detection	Spectral Shape (Correlation) trigger; Limit lines; "Peaks" trigger for FSK formats (assumes Signal Surveyor with option USD)			
Trigger Slope	Positive or Negative			
<b>Display</b>				
Display Range	User adjustable Reference Level and Scale to .01 dB per division Ten Division grid available, also grids for Energy History, Frequency List, Alarm Regions and Handoffs (Signal Surveyor)			
Trace Update Rates	Span 20 MHz, RBW 10 kHz, 32 averages: > 320 updates/second (nominal) Span 6 GHz, RBW 10 kHz, 4 averages: > 1 update/second (nominal)			
Number of traces	4 (with Signal Surveyor) 20 (with VSA - limited only by PC performance)			
Number of Averages	1 to 1,024 (with Surveyor) Up to 16,384 (with SAL API)			
<b>Amplitude</b>				
Max input power	+20 dBm			
Input attenuator range	-16 dB to 0 dB (engages broadband pre-amplifier) 0 to 45 dB (via SMT and SAL programming), in 1 dB steps 0 to 34 dB (via Signal Surveyor), in 2 dB steps			
Input range (VSA)	+20 dBm to -42 dBm			
Antenna port isolation	> 30 dB below 600 MHz > 24 dB above 600 MHz			
RF Input VSWR	< 2.5:1			
ADC	14 bit @ 56 MS/sec			
Amplitude accuracy (Power measurement, Center of IF)	User atten ≤ 20 dB: ± 2.0 dB User atten > 20 dB, 20 MHz to 5.9 GHz: ± 3.0 dB User atten > 20 dB, 5.9 to 6 GHz: ± 4.0 dB			
Noise figure, sensitivity and displayed Average Noise Level DANL (with amplitude corrections, user attenuation set to -16 dB, center of IF)	Frequency	Noise Figure	Sensitivity (25 KHz RBW)	DANL (10 Hz RBW)
	750 - 1240 MHz (preamp* on)	< 13.2 dB	< -116.8 dBm	< -150.8 dBm
	1250 - 1700 MHz (preamp* on)	< 14.3 dB	< -115.7 dBm	< -149.7 dBm
	1700 - 1800 MHz (preamp* on)	< 16.6 dB	< -115.4 dBm	< -149.4 dBm
	20 - 60 MHz	< 22.0 dB	< -108.0 dBm	< -142.0 dBm
	60 - 800 MHz	< 18.0 dB	< -112.0 dBm	< -146.0 dBm
	800 - 1850 MHz	< 22.0 dB	< -108.0 dBm	< -142.0 dBm
	1850 - 2550 MHz	< 19.5 dB	< -110.5 dBm	< -144.5 dBm
	2550 - 2850 MHz	< 22.0 dB	< -108.0 dBm	< -142.0 dBm
	2850 - 3650 MHz	< 20.0 dB	< -110.0 dBm	< -144.0 dBm
	3650 - 4650 MHz	< 23.5 dB	< -106.5 dBm	< -140.5 dBm
	4650 - 6000 MHz	< 26.0 dB	< -104.0 dBm	< -138.0 dBm

\* Pre-amp in table refers to a banded pre-amp which, when engaged, operates in the frequency range of 750 – 1800 MHz

Cable loss between antenna and receiver (minimal due to collocation of antenna and IP67 receiver): 1 to 2 dB

## Technical Specifications and Operating Characteristics

<b>Amplitude (continue)</b>		
Second Order Intercept SOI (mixer level = -10 dBm)	Frequency	SOI (IP2), dBm
	20 - 850 MHz	> 26
	850 - 1450 MHz	> 58
	1450 - 2400 MHz	> 39
	2400 - 2800 MHz	> 29
Third Order Intercept TOI (IP3, 0 dB user attenuation, 200 kHz tone spacing, both in IF, mixer level = -10 dBm)	Frequency	TOI (IP3), dBm
	20 - 850 MHz	> 7.7
	850 - 2700 MHz	> 8.5
	2700 - 2900 MHz	> 5.0
	2900 - 5900 MHz	> 6.6
	5900 - 6000 MHz	> 5.9
IF/Image/Spurious Rejection	Frequency	IF/Image/Spurious Rejection
	20 - 200 MHz	> 48.0
	200 - 650 MHz	> 52.5
	650 - 2650 MHz	> 53.0
	2650 - 2750 MHz	> 48.0
	2750 - 3850 MHz	> 53.5
	3850 - 3880 MHz	> 48.5
	3880 - 6000 MHz	> 51.0
<b>Time and Location</b>		
Clock synchronization methods	GPS or Precision time protocol (IEEE-1588, 2008 compatible)	
PTP clock modes	Grandmaster/Master/Slave	
Time reference accuracy to UTC	With GPS < 20 nanoseconds With PTP < 40 nanoseconds	
Data timestamp resolution	18 nanoseconds	
GPS	Receiver	Trimble Resolution-T (built into RF Sensor unit)
	Operating modes	Fixed or mobile (Land)
	GPS horizontal accuracy	< 9 meters (90%)
	GPS altitude accuracy	< 18 meters (90%)
	GPS antenna	Remote active (3.3V) antenna with 3 meter cable



## Technical Specifications and Operating Characteristics

<b>Signal processing</b>		
Usable information bandwidth	20 MHz	
Data types	I/Q time series FFT spectrum	16 or 32 bit resolution Up to 16k points, 50% overlapped
Data transfer modes	I/Q and FFT (simultaneous) Streaming or Block mode	
Data streaming rates (Gapless) on 100BT network	I/Q time series FFT spectrum	Up to 1.9 MHz signal bandwidth Full 20 MHz FFT spectrum
Signal LOOKBack capture memory	512 MBytes	
<i>LOOKBack refers to the ability to stream wideband I/Q data into the First In First Out (FIFO) memory located in the RF Sensor. When short duration bursts occur, LOOKBack enables the user to detect and locate these short bursts.</i>		
Tune and listen (in signal surveyor)	Audio demodulation types	AM, FM
	Audio output	Streams gap-free Stereo, Left and/or Right channel
	Receiver bandwidth	Adjustable from 6 kHz to 200 KHz
	Squelch range	-135 to -20 dBm
	Audio recording length	Streams to disk, limited by file or drive size.
	Audio filtering	High and Low Pass Filters available for voice enhancement
<b>Sensor management and software</b>		
Sensor host PC	Operating System	Win7 (32/64 bit)
	CPU	> 2 GHz, minimum 2 processors
	RAM	> 4 GB
	Hard Drive	> 300 GB
RF Sensor health & status monitor	Hardware watchdog checks in once per minute	
RF Sensor diagnostics	Remote controlled self-test	
RF Sensor data security	RAM memory cleared at power-off or reboot	
Embedded applications	Sensor Management	
	AM/FM audio streaming*	
	Spectrum Viewer	
	Emitter Geolocation (with N6854A software)	
<i>*AM/FM Audio streaming provided with the RF Sensor software offers AM, FM and FM-W demodulation and requires only 0.2% of a 100Mbps link to stream FM-W audio back from the RF Sensor. Spectrum Viewer requires about .5% of a 100Mbps link to bring a gap free 20 MHz spectrum into view.</i>		
Networking interface	10/100 Ethernet TCP	
Networking IP address type	Auto / DHCP / Static	
Network configuration options	Sensor Alias	
	IP address	
	Host Name	
	Subnet Mask	
	Gateway IP	
	DNS1, DNS2	

## Technical Specifications and Operating Characteristics

<b>Programmatic interface</b>		
Sensor Access Library (SAL)	C language API	
Functions available	Over 50 callable routines/functions for sensor control and remote data access	
Data retrieval	I/Q time series or FFT spectrum data	
<b>General</b>		
Power requirements	15 - 24 VDC nominal (optional 120/240 VAC indoor adapter)	
Power consumption	30 Watts maximum; 25 Watts typical	
Enclosure	Sealed Aluminum case	
Dimensions	Length	29.2 cm (11.5 in)
	Width	24.6 cm (9.7 in)
	Height	5.4 cm (2.1 in)
Weight	3.5 kg (7.7 lb)	
Connectors	RF input ports (2)	Type-N (50 ohm) electronically switched
	Power	Switchcraft SF6382-2SG-520 standard circular connector
	LAN	Ethernet RJ45, ruggedized and weatherproof
	GPS	Type-TNC (female)
Enclosure rating	IP67 (for ingress of dust and water)	
Operating temperature range	-15 °C to +55 °C (-31 °F to 131 °F) not in direct sunlight; unit is operational to -35 °C but requires additional heating/insulation below -15 °C. All temperature specs assumed at sea level.	
Humidity	15 – 95%	
Altitude	6400 m (21,000 feet) maximum	
EMI compliance	IEC 61326-1:2005, EN 61326-1:2006: Immunity table 2: Industrial locations, CISPR 11:2003: Emissions group 1 Class B: Domestic locations	
Safety compliance	IEC 61010-1:2001, EN 61010-1:2001	
Pole-top mount	7.6 cm (3 inches) maximum diameter pole or rail mount	
Rack-mount	19 inch rack 2U height	
Accessories supplied	Mounting Bracket with assembly hardware to attach RF Sensor Ruggedized Ethernet RJ45 connector to attach to RF Sensor Switchcraft connector for power cable to source RF Sensor Installation Guide	

**myKeysight**

**myKeysight**

[www.keysight.com/find/mykeysight](http://www.keysight.com/find/mykeysight)

A personalized view into the information most relevant to you.



[www.axiestandard.org](http://www.axiestandard.org)

AdvancedTCA® Extensions for Instrumentation and Test (AXIe) is an open standard that extends the AdvancedTCA for general purpose and semiconductor test. Keysight is a founding member of the AXIe consortium.



[www.lxistandard.org](http://www.lxistandard.org)

LAN eXtensions for Instruments puts the power of Ethernet and the Web inside your test systems. Keysight is a founding member of the LXI consortium.



[www.pxisa.org](http://www.pxisa.org)

PCI eXtensions for Instrumentation (PXI) modular instrumentation delivers a rugged, PC-based high-performance measurement and automation system.



**Three-Year Warranty**

[www.keysight.com/find/ThreeYearWarranty](http://www.keysight.com/find/ThreeYearWarranty)

Keysight's commitment to superior product quality and lower total cost of ownership. The only test and measurement company with three-year warranty standard on all instruments, worldwide.



**Keysight Assurance Plans**

[www.keysight.com/find/AssurancePlans](http://www.keysight.com/find/AssurancePlans)

Up to five years of protection and no budgetary surprises to ensure your instruments are operating to specification so you can rely on accurate measurements.



[www.keysight.com/quality](http://www.keysight.com/quality)

Keysight Electronic Measurement Group  
DEKRA Certified ISO 9001:2008  
Quality Management System

**Keysight Channel Partners**

[www.keysight.com/find/channelpartners](http://www.keysight.com/find/channelpartners)

Get the best of both worlds: Keysight's measurement expertise and product breadth, combined with channel partner convenience.

[www.keysight.com/find/n6841a](http://www.keysight.com/find/n6841a)

For more information on Keysight Technologies' products, applications or services, please contact your local Keysight office. The complete list is available at: [www.keysight.com/find/contactus](http://www.keysight.com/find/contactus)

**Americas**

Canada	(877) 894 4414
Brazil	55 11 3351 7010
Mexico	001 800 254 2440
United States	(800) 829 4444

**Asia Pacific**

Australia	1 800 629 485
China	800 810 0189
Hong Kong	800 938 693
India	1 800 112 929
Japan	0120 (421) 345
Korea	080 769 0800
Malaysia	1 800 888 848
Singapore	1 800 375 8100
Taiwan	0800 047 866
Other AP Countries	(65) 6375 8100

**Europe & Middle East**

Austria	0800 001122
Belgium	0800 58580
Finland	0800 523252
France	0805 980333
Germany	0800 6270999
Ireland	1800 832700
Israel	1 809 343051
Italy	800 599100
Luxembourg	+32 800 58580
Netherlands	0800 0233200
Russia	8800 5009286
Spain	0800 000154
Sweden	0200 882255
Switzerland	0800 805353
	Opt. 1 (DE)
	Opt. 2 (FR)
	Opt. 3 (IT)
United Kingdom	0800 0260637

For other unlisted countries:  
[www.keysight.com/find/contactus](http://www.keysight.com/find/contactus)  
(BP-06-09-14)

